



The Lodge Western Road, Crediton, EX17 3RD

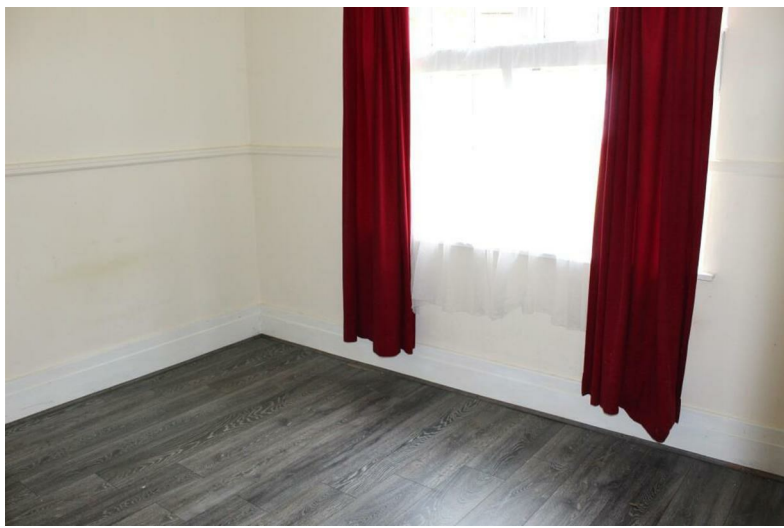
- Two Bedroom Bungalow
- Allocated Parking Space
- No Onward Chain
- Use Of Communal Garden Space
- EPC Rating E
- Council Tax Band A

Rooted in local history, the main building of The Lodge began life as a workhouse in the 1830s. It was later used as a hospital and expanded with various extensions and additions, creating the structure seen today. During the 1980s and 1990s, the building was converted into apartments, with one, two, and three-bedroom units forming the majority of the main building. One of the later additions is this semi-detached freehold bungalow, which we understand comes with a dedicated parking space.

The property itself comprises a kitchen, lounge, two bedrooms, and a bathroom. Residents also benefit from access to the communal grounds, as well as the allocated parking space.

Crediton is a historic Mid Devon market town, situated just 7.5 miles north-west of the Cathedral City of Exeter. with the M5 motorway approximately 3 miles away. The town offers





Western Road, Crediton, EX17

Approximate Area = 628 sq ft / 58.3 sq m

For identification only - Not to scale

